

FONT: Avant Garde MdITCTT

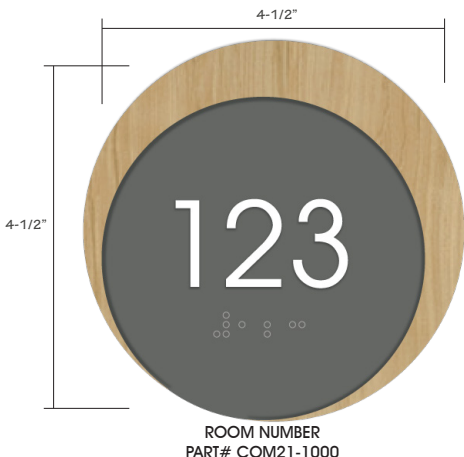
COLORS & FINISHES:

SW 7068

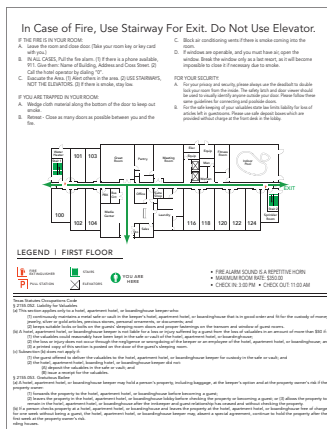
FORMICA
DANISH MAPLE

ROOM NUMBERS:

IN ROOM PRODUCTS:



ROOM NUMBER
PART# COM21-1000



PRINTED IN ROOM EVACUATION
PART# SC-1226
8.5"x11"



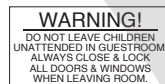
DO NOT HANG ON SPRINKLER
PART# 0331-2.5X2.5Dclbeno
2.5" x 2.5"



DEADBOLT RIGHT
PART# SC-0335-R
3" x .625"



DEADBOLT LEFT
PART# SC-0335-L
3" x .625"



BALCONY WARNING DECAL
PART# SC-0326-6X3
6" x 3"



ACCESSIBLE
SYMBOL
PART# COM21-1024
3" x 3"



Hearing
Impaired
PART# COM21-1025
3" x 3"

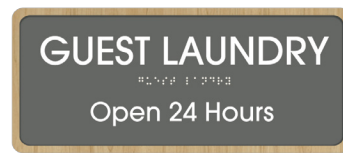
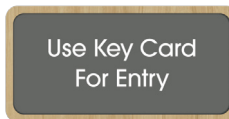


NO SMOKING
SYMBOL
PART# COM21-1026
3" x 3"



MANAGER ON DUTY SIGN
PART# COM21-1301
10" x 5"

USE KEY CARD
PART# COM21-1537
8" x 4"



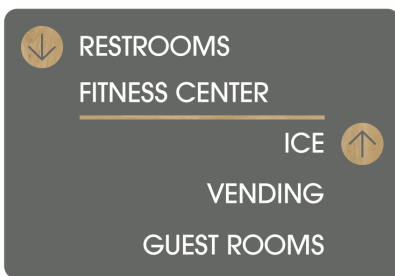
GUEST LAUNDRY HOURS
PART# COM21-1606
11.75" x 5"



1 LINE DIRECTIONAL SIGN
PART# COM21-1101
11.75" x 4"



2 LINE DIRECTIONAL SIGN
PART# COM21-1102
11.75" x 4"



5-6 LINE DIRECTIONAL SIGN
PART# COM21-1105
11.75" x 8"



MEETING ROOM W/ INSERT & SLIDER
PART# COM21-1529
11.75" x 15"



4 LINE DIRECTIONAL SIGN
PART# COM21-1104
11.75" x 8"



9-10 LINE DIRECTIONAL SIGN
PART# COM21-1107
11.75" x 11.75"



PERPENDICULAR OVERHEAD (FLAG) SIGN
PART# COM21-1111
11.75" x 5"



CORRIDOR EVACUATION
PART# COM21-1223
11.75" x 18"

For a complete sign offering or quotation, please call your Brand Specialist.



INTERIOR SIGNAGE PACKAGE

CONTACT EMAIL:

EXP. DATE CVV Code: AUTHORIZED SIGNATURE

1/2021